

THE PARDEE HOME MUSEUM CLASSROOM LESSON PLAN # 1

LESSON PLAN: Dear Pardee family member or household staff member.

SUBJECTS: Language arts and social studies.

OBJECTIVES: To better understand a Pardee family member or household staff member and the times in which they lived.

RESOURCES/MATERIALS: writing journal or paper.

ACTIVITIES AND PROCEDURES:

1. Discuss the tour of The Pardee Home Museum including the Pardee family members or member of the household staff. Brainstorm their personal accomplishments. This may be done with partners or in whole group instruction. Ask students: What did they learned about the lives of Pardee family members or household staff at the Pardee house? What words would you use to describe them?
2. Make a word web of what the students remember about the tour on the chalkboard or in their journals.
3. Once students are responding with their opinions about Pardee family members or members of the household staff, they are ready to write about them. Ask the question "If a Pardee family member or member of the household staff were to write a letter to someone, what would that letter be about? To whom would the letter be written?"
4. Individually or with partners, students will write a sample letter from a Pardee family member or a member of the

household staff to someone. They can also create a correspondence between a Pardee family member or household staff member and another person.

5. Students will share the letters with the class and later post letters on classroom bulletin board.

THE PARDEE HOME MUSEUM CLASSROOM LESSON PLAN # 2

LESSON PLAN: The Pardee Home Museum architecture and its collections.

SUBJECTS: Art, language arts, and social studies

PURPOSE: Using artistic expression and writing, students will focus on one aspect of the Pardee Home Museum architecture or the collections.

OBJECTIVES:

1. Students will create drawings about some aspect of Pardee Home Museum architecture or the collections within the Pardee Home.
2. Students will describe their drawings by writing a descriptive paragraph or label.

RESOURCES/MATERIALS:

Art paper, crayons, felt tip markers, magic markers, colored pencils, regular pencils or paint and paint brushes.

ACTIVITIES AND PROCEDURES:

1. Distribute drawing and writing paper to students.

2. Ask students to draw a picture of the Pardee Home, some architectural feature, or part of the collections they remember about the tour.
3. Students will write about their drawings using descriptive sentences or paragraphs.
4. Students will share their drawings and read from their writings.

Crossword Puzzle

The Pardee Home Museum Crossword Puzzle is a post-tour activity for students focusing on historic facts in the tour. This puzzle reinforces social studies concepts and checks for understanding of information. The following pages present the Pardee Home Museum crossword puzzle and answer sheet.

THE PARDEE HOME MUSEUM CROSSWORD PUZZLE

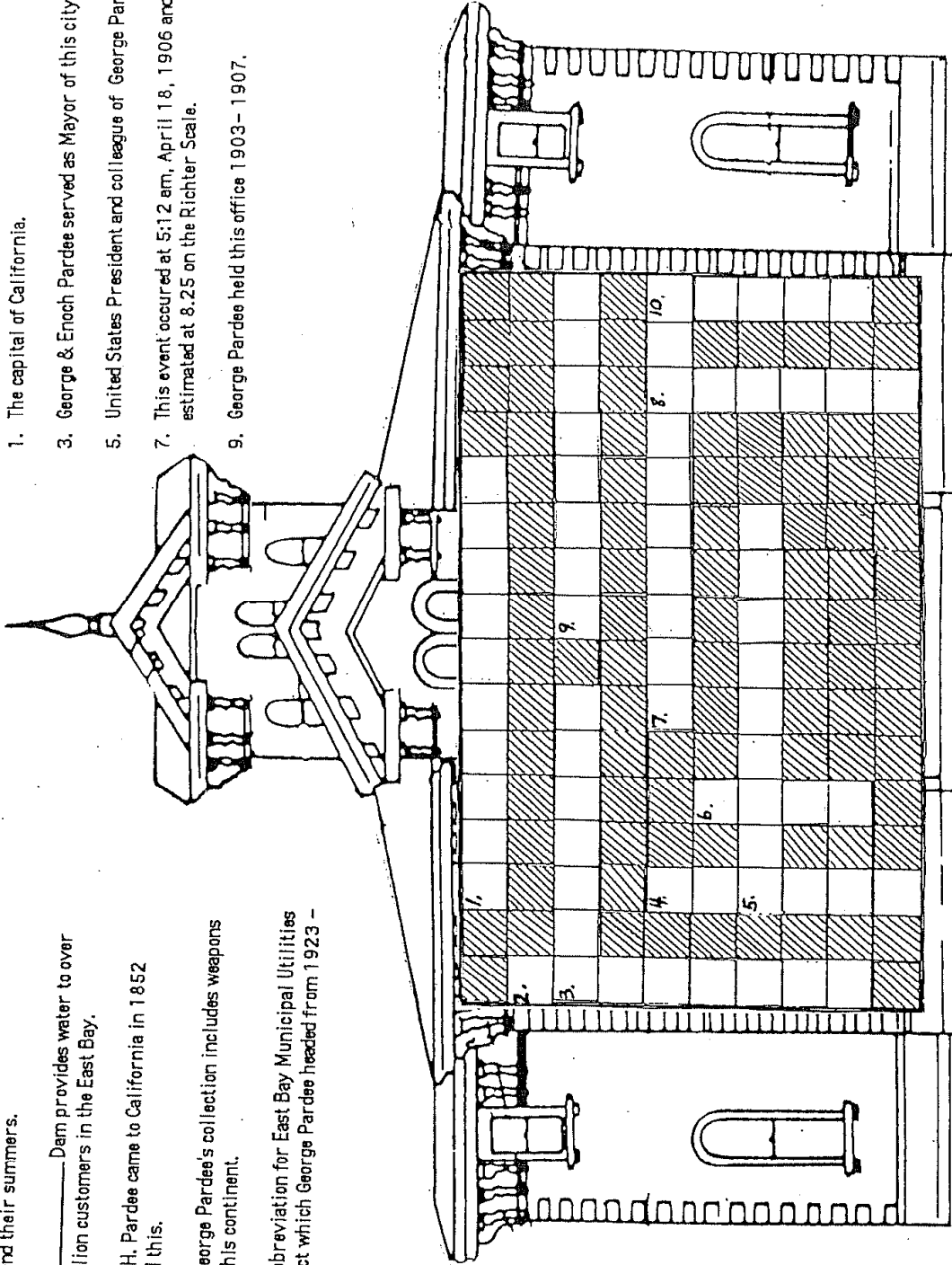
Down

2. This park was a favorite place for the Pardees to spend their summers.
4. _____ Dam provides water to over 2 million customers in the East Bay.
6. Enoch H. Pardee came to California in 1852 to find this.
8. Mrs. George Pardee's collection includes weapons from this continent.
10. The abbreviation for East Bay Municipal Utilities District which George Pardee headed from 1923 - 1941.

The Pardee Home Museum
Oakland, CA

Across

1. The capital of California.
3. George & Enoch Pardee served as Mayor of this city.
5. United States President and colleague of George Pardee.
7. This event occurred at 5:12 am, April 18, 1906 and estimated at 8.25 on the Richter Scale.
9. George Pardee held this office 1903 - 1907.

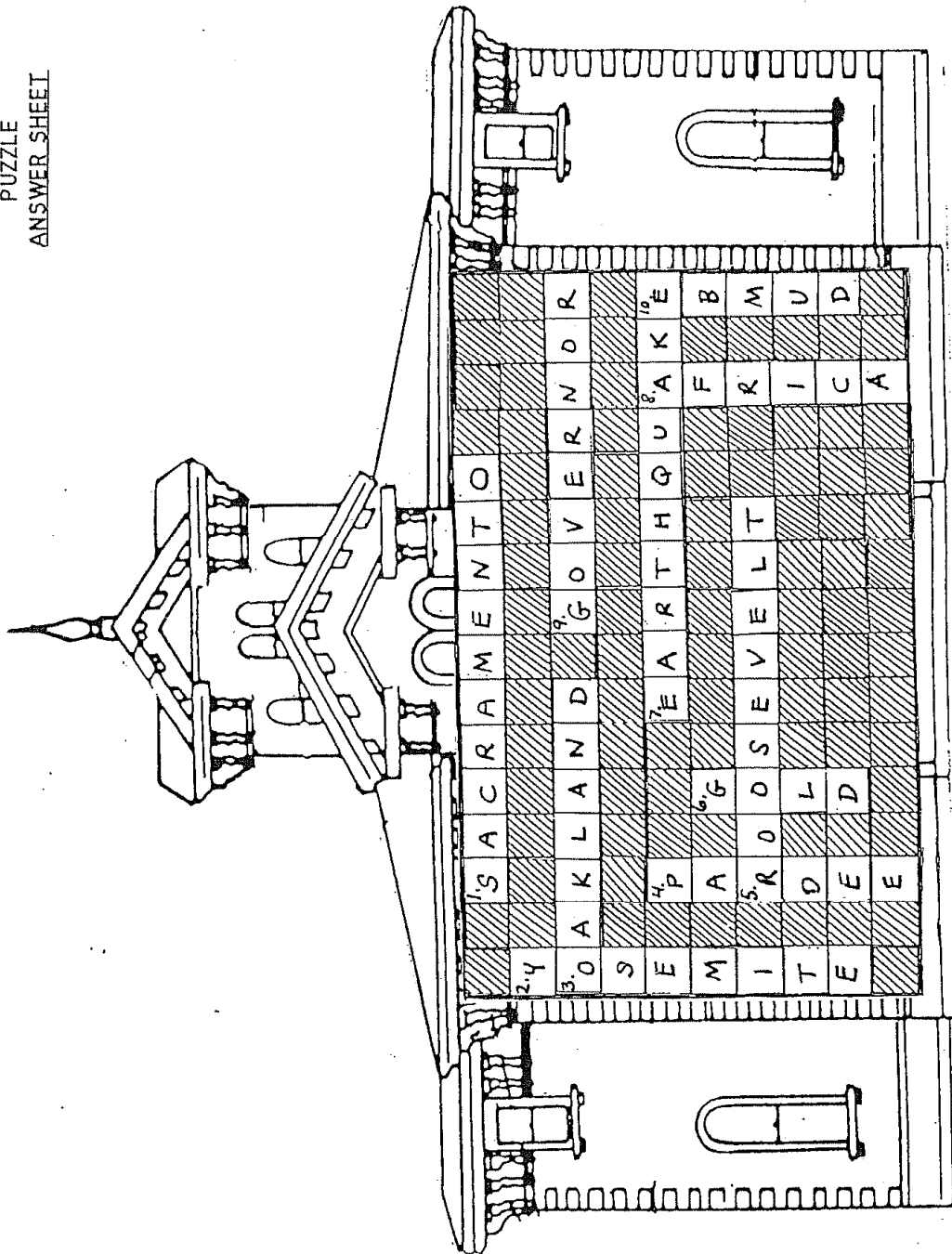


THE PARDEE HOME
CROSSWORD
PUZZLE

THE PARDEE HOME MUSEUM CROSSWORD PUZZLE ANSWER SHEET

THE PARDEE HOME
CROSSWORD
PUZZLE
ANSWER SHEET

The Pardee Home Museum
Oakland, CA



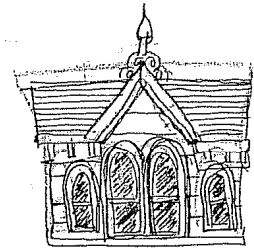
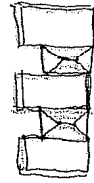
Pardee Home Museum Treasure Hunt

The Pardee Home Museum Architectural Treasure Hunt page is a focus on the Italianate Villa architectural style of the house and its architectural details. In this activity students are utilizing new vocabulary words and matching these to the pictures of the building's details. The following is the Pardee Home Museum Architectural Treasure Hunt.

THE PARDEE HOME MUSEUM TREASURE HUNT

The Pardee Home Museum is an Italianate Villa built in the years 1868 and 1869. A villa is a house designed to look like a great country estate, not a city house, and the word Italianate simply means that the house is designed in a style that was once popular in the country of Italy. Listed below are some of the details found on the Pardee Home Museum which help us identify it as an Italianate villa. Can you match the name of the detail with the correct photo?

1. Finial (fin-i-al)
an ornament finishing off
the apex of a roof.

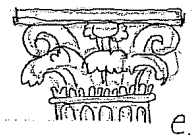
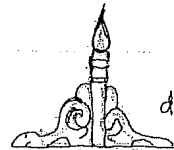


2. Newell Post (noo-el) a post that
supports the handrail of a stair
at the top or bottom of a staircase.

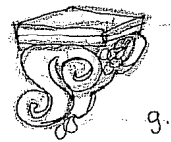
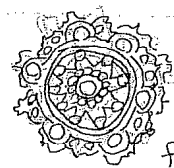


3. Dovecote (duv-koht)
shelter for domesticated pigeons.

4. Bracket (brak-it)
a support projecting from an upright surface.



5. Medallion (me-dal-yon)
a large circular ornamental design.

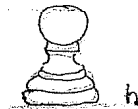


6. Quoins (koin) the external angle
of a building, a cornerstone.

7. Corinthian Capital (ko-rin-thi-an)
a capital with acanthus leaves.

8. Tympanum (tim-pa-num) a triangular
recessed space above a door or window.

9. Cupola (kyoo-po-la) a small dome on a roof.



Tour Evaluation

The tour evaluation for the Pardee Home Museum presents an opportunity for teachers to reflect upon the tour and give suggestions for improvements. Tour evaluations are effective because they survey those taking the tour and provide valuable feedback from the audience one is trying to reach. The following is the tour evaluation developed for this project.

